

Clinician discharge checklist

PREVENA™ Incision Dressing **placed on** _____
Dressing to be **removed on** _____
by _____

CONFIRM that the PREVENA™ Incision Dressing has a good seal

DETERMINE if the incision is still draining and if extra canisters are needed

IDENTIFY the patient's correct PREVENA™ Therapy Unit and corresponding canisters



PREVENA™ 125
Therapy Unit



PREVENA™ PLUS
125 Therapy Unit

REVIEW the power supply:

- The PREVENA™ 125 Therapy Unit runs on AA batteries.
- The PREVENA PLUS™ Therapy Unit has a rechargeable battery that will typically last ~9 hours on a charge.

SEND the patient home with:

- Extra canisters
- PREVENA™ Therapy Patient Guide
- Power cord (PREVENA PLUS™ Therapy Unit only)
- Patch strips/extra drape

REVIEW patient resources

Support: **800-275-4524**
prevena4patients.com

Notes: _____

Tear along the lines

PREVENA™ System specialists are here to support you. Call **800-275-4524** with questions or to speak to a clinician trained on your PREVENA™ System.

Visit **prevena4patients.com** for a copy of the PREVENA™ Therapy Patient Guide.

IMPORTANT INFORMATION

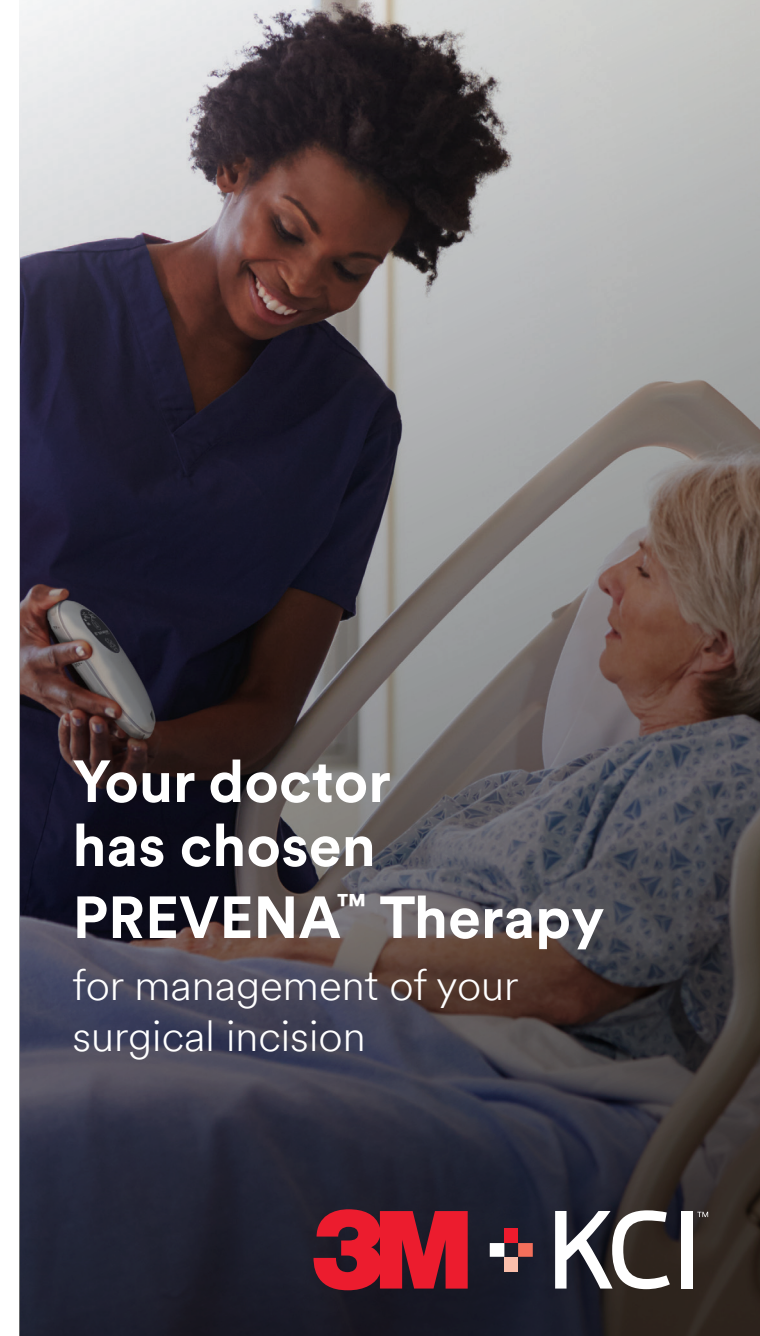
Patients: It is important that you discuss any potential benefits and risks of a specific therapy with your doctor to decide whether it is right for you. Please consult your treating medical professional regarding specific questions and important information related to your PREVENA™ Therapy indications, contraindications, warnings, precautions and operation. Rx only.

NOTE: Specific indications, contraindications, warnings, precautions and safety information exist for these products and therapies. Please consult a clinician and product instructions for use prior to application. Rx only.

©Copyright 2020 3M. All rights reserved. 3M and the other marks shown are marks and/or registered marks. Unauthorized use prohibited. LIT#29-A-313 • PRA-PM-US-01541 (06/20)

PREVENA™

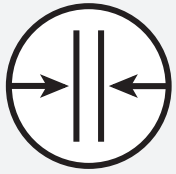
INCISION MANAGEMENT SYSTEM



Your doctor
has chosen
PREVENA™ Therapy
for management of your
surgical incision



Your doctor has selected the PREVENA™ System to help protect your incision by:



Helping hold incision edges together



Providing protection from outside sources of infection

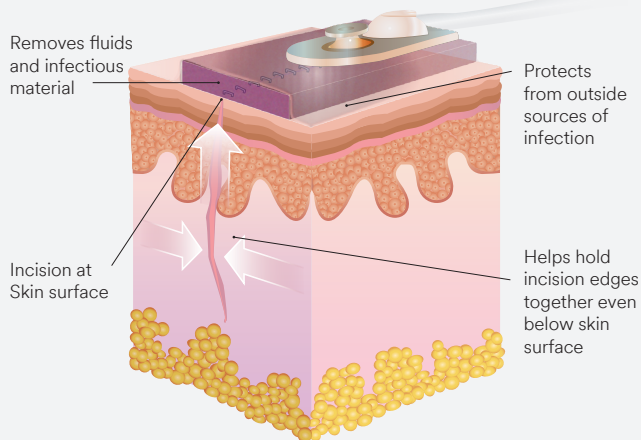


Removing fluid from the incision site

Protecting Your Incision is Important to Your Recovery

- An **incision** is a cut through the skin and tissue of the body that is made during surgery and then closed using products such as surgical stitches, staples or a combination of these methods.
- Incisions heal at the skin surface as well as below.
- Taking care of your incision is a key step that may impact both your recovery time and your quality of life.

PREVENA™ Therapy



FAQs

How long do I keep PREVENA™ Therapy on my incision?

- Wear the system for as long as your doctor has ordered. The therapy unit will turn off automatically at 7 days.

Will my incision dressing need to be changed?

- The dressing is not typically changed. Follow your doctor's instructions.

What happens if my PREVENA™ System alarms?

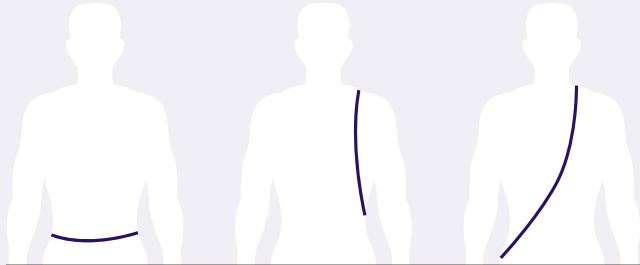
- The therapy unit has alarms that you can see and hear to alert you of a potential issue such as a low battery or air leak. In most cases the issue is easily resolved. Refer to the PREVENA™ Therapy Patient Guide or call **800-275-4524** if you have questions.

Where do I get more information?

- Your PREVENA™ Therapy Patient Guide has more complete safety information and details on how to use your PREVENA™ Therapy. You may visit **prevena4patients.com** to obtain more information on PREVENA™ Therapy.
- For answers to more questions, call **800-275-4524** to speak with a PREVENA™ Therapy specialist.
- Contact your doctor with any medical questions. In the case of an emergency, call your local medical resource (i.e. 911).

How to Wear Your PREVENA™ Therapy Unit

This portable unit should **always** be kept on for the time your doctor has instructed. For sleeping and showering, follow the instructions listed in this brochure. The unit can be worn under your clothing and includes a carrying case with adjustable straps you can use multiple ways.



At the hip

Over the shoulder

Across your body



PREVENA™
125 therapy
unit and
carrying
case

NOTE: The PREVENA™ System is not indicated for use in children.

What is PREVENA™ Therapy?

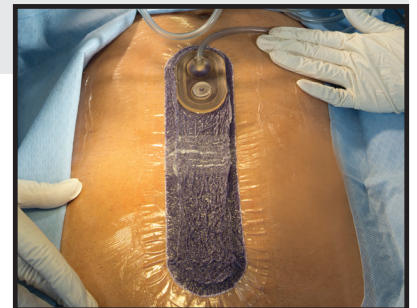
PREVENA™ Therapy is a portable, disposable system, which uses **negative pressure** (like a vacuum) to protect your incision.

Meet Your PREVENA™ System

You will be provided after surgery with the PREVENA™ PEEL & PLACE™ System or the PREVENA PLUS™ System. Both PREVENA™ Systems work similarly with just a few differences.

Your System includes:

- A therapy unit that provides negative pressure to the dressing
- A dressing with a water resistant cover that is placed over your incision
- A connection tube
- A canister where incision fluid is collected
- A battery charger (The PREVENA PLUS™ Therapy Unit has a rechargeable battery)
- A carrying case with adjustable straps



NOTE: The PREVENA™ System can be used on different incision types. Your incision size and location may vary from what is shown in the above image.

Caring for Your PREVENA™ Therapy Unit

PREVENA PLUS™ 125 Therapy Unit

System:

Keep your therapy unit in a safe place where:

- Tubing will not become kinked or pinched
- It cannot be pulled off a table or dropped onto the floor



Showering:

If cleared by your doctor, a quick, light shower is ok. Keep the therapy unit away from direct water spray. **Do not submerge dressing in water.**

Before showering, disconnect the dressing from the therapy unit.

1. Hold the ON/OFF button down until therapy stops
2. If applicable, close the clamp located on the connection tubing
3. Disconnect the tubing from the therapy unit
 - When towel drying, be careful not to disrupt the dressing.

See PREVENA PLUS™ Therapy Patient Guide for additional details.

Batteries:

- This therapy unit has a rechargeable battery and comes with a charger.
- Bring your charger with you if you are gone for extended periods of time.
- For convenience, consider charging your therapy unit battery while you are sleeping.

PREVENA™ 125 Therapy Unit

System:

Keep your therapy unit in a safe place where:

- Tubing will not become kinked or pinched
- It cannot be pulled off a table or dropped onto the floor



Showering:

If cleared by your doctor, a quick, light shower is ok. Keep the therapy unit away from direct water spray. **Do not submerge dressing in water.**

- When towel drying, be careful not to disrupt the dressing.

See PREVENA™ Therapy Patient Guide for additional details.

Batteries:

- This therapy unit comes with three AA size batteries and cannot be recharged.
- It is recommended that you keep extra batteries on hand. If the batteries run out, consult your PREVENA™ Therapy Patient Guide on how to replace the batteries.

Your PREVENA™ Therapy Dressing

Do not attempt to remove or peek under the dressing while therapy is being applied.